

Stainless steel pump-head.  
Integrated unloader valve.



Centralized and balanced lifting eye.



Electronically controlled engine.



Hot Dip galvanized frame.



Fuel level gauge.



Height of water-tank may vary, depending on model

Model:	CD25-170	CD25-250	CD25-350	CD25-400	CD25-500
<b>Technical details:</b>					
<b>Pump Spec.</b>					
W.P. Bar / Psi	170 / 2900	250 / 4000	350 / 5000	400 / 5800	500 / 7250
Flow Lpm / Gpm	42 / 11	32 / 8,5	23 / 6	21 / 5,5	17 / 4,2
Pump Speed Rpm	1750	1750	1750	1750	1750
<b>Engine Spec.</b>					
Type	Kubota Diesel 3 cyl. Water cooled				
Power Kw/Hp	18,5 / 25				
Rpm	3000				
Fuel Tank- Capacity	28 L / 7,5 Usg				
Fuel consumption L / Hour	5,7				
Noise db(A) 7m	80				
<b>Dimensions</b>					
L x W x H mm	1200 x 800 x 1300				
Weight Kg	350				

All models are CE marked

### Standard accessories incl. with each machine:

- 20m light weight thermoplastic high pressure hose c/w 1/2"BSPP female swivel connections.
- Trigger operated dry-shut gun c/w 0,85m long stainless steel lance.
- Straight jet spraying nozzle.

### Optional accessories for each model:

- 20m light weight thermoplastic high pressure hose c/w 1/2"BSPP female swivel connections (Extension hose).
- Rotating nozzle.
- Sand blasting kit c/w boron carbide nozzle.
- Mobile abrasive container.
- Spare part kit.



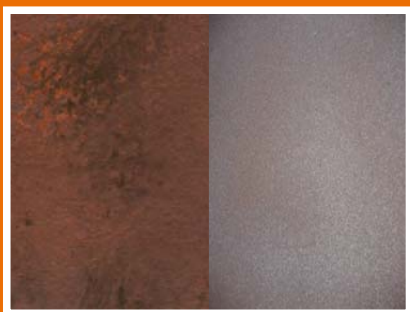
Rotating Nozzles.



Wet Sand Blasting Equipment.



Wet Sand-blasting on Corroded steel plates.



Before & After.



DEN-JET Factory  
Denmark.

## HIGH PRESSURE WATER BLASTERS & ACCESSORIES

### UHP accessories (< 40.000PSI)

- Ultra high pressure guns.
- Rotating Nozzles.
- Floor/Deck cleaners.
- Hoses & Fittings.
- Nozzles & Nozzle carriers.
- Filters & Filtration systems.



### WB accessories (< 20.000PSI)

- Dump & Dry Shut guns.
- Foot valves.
- Unloader & Safety valves.
- Hoses & Fittings.
- Nozzles & Nozzle carriers.
- Wet Sand-Blasting Equipment.
- Strainer & Filters.



### Spareparts for other brands

- Guns & accessories.
- Fittings & connections.
- Internal pump parts.
- Packings & repair kits.
- Nozzles & Nozzle carriers.



### Protection & Safety equipment

- Water jet protection.
- Dress.
- Boots.
- Helmet, Visor & Gloves.
- Rain suits.
- Hose protection.



### CE 20 Series

- Complete product range of electrically driven high pressure waterblasters ranging from 170 to 500 Bar in a compact design for multi purpose applications.
- Various accessories.



### Company Profile :

Den-Jet's long experience in the high pressure industry has enabled us to create a range of water blasters and accessories, suitable for numerous applications in the industrial and marine industries. DEN-JET supplies complete packages to end-users and middlemen, as well as bare shaft pumps and parts to OEM's. Our main goal is to produce quality products at a competitive price level.

Contact:

DEN-JET Nordic A/S - Terndrupvej 7, Astrup, DK9510 Arden, Denmark  
Tel: +45-98 55 88 68 - Fax: +45-98 55 88 18 - e-mail: denjetnordic@denjet.com - www.denjet.com

