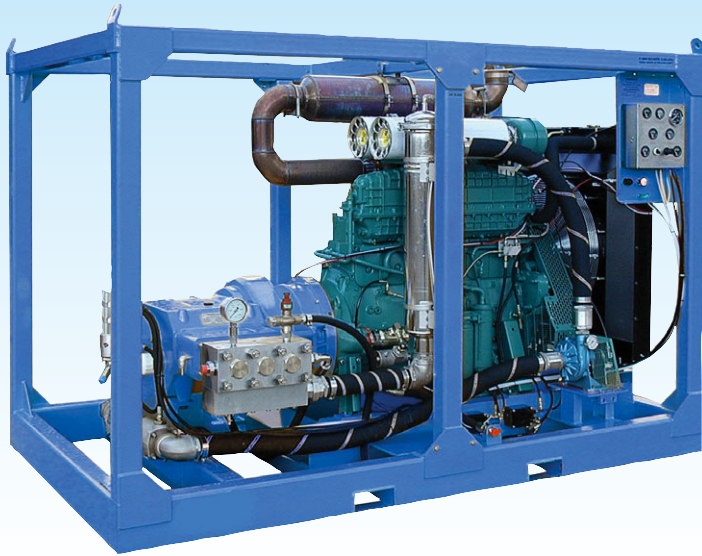


HPS3000 DC HP Water Jetting Unit



Water Jetting Solutions



HPS3000 Diesel Crashframe

Features

- HPS3000 pump with pressure lubrication, filtration and oil cooling. Stainless steel pumphead, solid ceramic plungers, integral gearbox and SAE adaptor housing.
- Glycerine filled pressure gauge & safety relief valve
- Volvo 6 cylinder TAD942VE engine, complies with EU stage II exhaust emission regulations. Rated to 235 kW (315 hp) with auto shutdown control panel
- Boost pump, high capacity stainless steel filter housing with 50 micron element, heavy duty suction line hose, stainless steel fittings & boost pressure switch.
- Stainless steel water tank (optional)
- Crashframe with two forklift pockets & four lifting points. High quality powder coated paint finish

Build Options

- Unloader / pressure adjusting valve for single or multi tool operation
- Selector / diverter valves
- Spark arresting silencer & Chalwyn valve
- Rigsafe or Zone 2 engine build
- Certified crashframes
- Alternative engines
- Zinc rich powder coated paint finish for corrosive environments
- High volume builds to 465 lpm at 250 bar (102.3 igpm / 123.3 usgpm at 3,625 psi)
- Enclosed versions
- Site trailer undergear
- Comprehensive range of accessories to cover every application

Typical performances *

74 lpm at 1400 bar	(16.4 igpm / 19.7 usgpm at 20,300 psi)
101 lpm at 1150 bar	(22.3 igpm / 26.8 usgpm at 16,675 psi)
120 lpm at 1000 bar	(26.3 igpm / 31.6 usgpm at 14,500 psi)
132 lpm at 900 bar	(29.1 igpm / 35.0 usgpm at 13,050 psi)
167 lpm at 700 bar	(36.8 igpm / 44.4 usgpm at 10,150 psi)
207 lpm at 570 bar	(45.5 igpm / 54.8 usgpm at 8,265 psi)

* Refer to HPS3000 pump data sheet for full range of performances

HPS3000, 225 kW (300 hp) diesel engine driven, crashframe mounted, High Pressure water jetting unit, suitable for the most demanding applications.

Simple to operate & maintain, this is probably the most user friendly HP unit on the market. Suitable for automated applications and multi gun / footvalve operation. Applications include hydro-

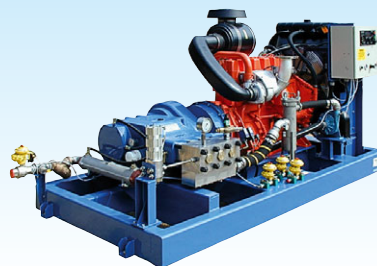
demolition, surface cleaning / de-scaling, coatings removal, heat exchanger / pipe cleaning, tank / vessel cleaning & floor, road & runway cleaning

Dimensions :
3.3m long x 1.8m wide x 2.0m high
(130" long x 71" wide x 79" high)

Weight :
3500 kg (7,700 lb)



Robotic cleaning of skids at automotive plant. 100 lpm / 1000 bar



HPS3000 DS (Diesel Skid)

Ultra High Waterblasters (Aust) Pty Ltd
9 Deebling Street West Ipswich Qld Australia
Ph +61 07 3812 1112 Fax +61 07 38121115
www.auswaterblasters.com.au Email info@auswaterblasters.com.au



In line with the Company's policy of research and development, alterations in design, dimensions and appearance are incorporated from time to time in order to ensure that important developments are included at the earliest opportunity. The Company, therefore, reserves the right to alter design, dimensions etc without notice.